



GAT MONTHLY MEMBERSHIP PROGRESS REPORT

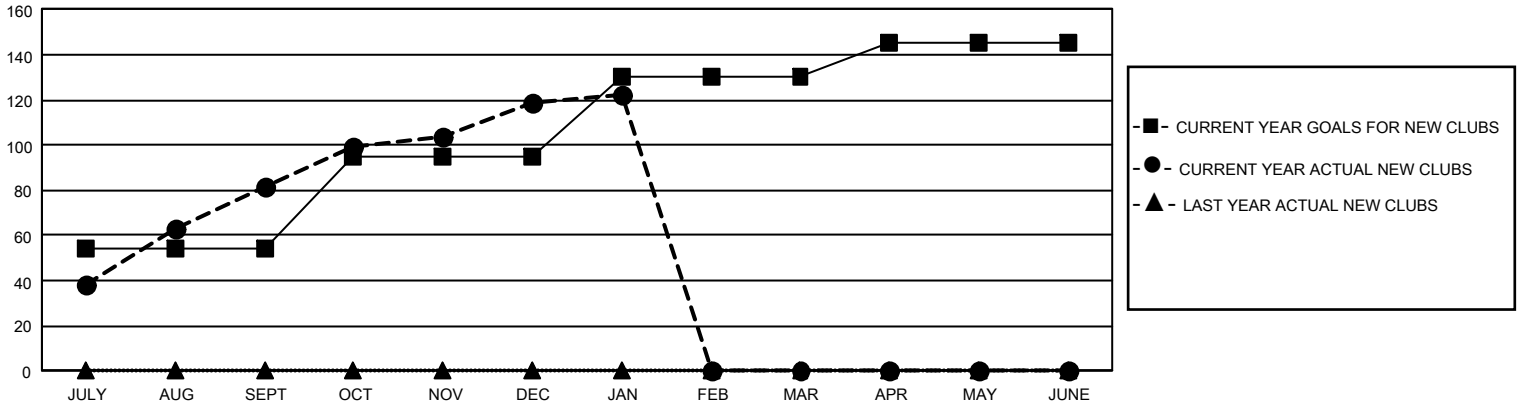
Results as of: 1/31/2022

GMT Constitutional Area 6, Group P

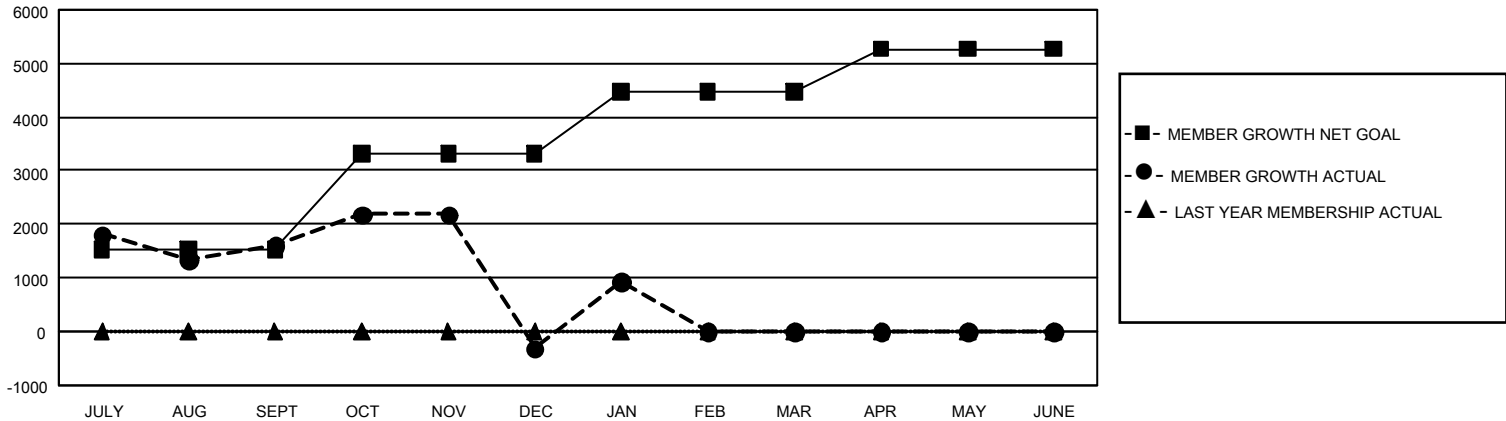
REPORT DOES NOT INCLUDE CLUBS IN UNDISTRICTED AREAS.

Clubs				Members			
RESULTS FOR 2021-2022				RESULTS FOR 2021-2022			
QUARTER	NEW CLUB GOAL	NEW CLUBS	DROPPED CLUBS	QUARTER	MEMBER GROWTH NET GOAL	MEMBER GROWTH ACTUAL	DROPPED MEMBERS ACTUAL (including transfers)
JULY/AUG/SEPT	162	82	53	JULY/AUG/SEPT	1520	6,124	3,711
OCT/NOV/DEC	123	37	63	OCT/NOV/DEC	1800	2,648	4,268
JAN/FEB/MAR	105	3	7	JAN/FEB/MAR	1155	1,784	435
APR/MAY/JUNE	45	0	0	APR/MAY/JUNE	790	0	0

GOALS AND ACTUAL NEW CLUBS CUMULATIVE



GOALS AND ACTUAL MEMBERS CUMULATIVE



DROPPED CLUBS: 123	1,228 CLUBS OF 1,797 ADDED 1 OR MORE NEW MEMBERS	<u>GENDER DISTRIBUTION</u>	
		MALE 50,132 (77.98%) FEMALE 14,137 (21.99%) NON BINARY 20 (0.03%) PREFER NOT TO ANSWER 2 (0.00%)	
<u>DROPPED MEMBERS</u>		CLICK HERE FOR CUMULATIVE MEMBERSHIP DATA	TOTAL FAMILY UNIT MEMBERS 28,014
DECEASED 165 CLUB CANCELLED 3,942 OTHER 4,309 TOTAL 8,416			FAMILY MEMBERS PAYING HALF DUES 17,154